



TEL 01580 715400

lettings@harpersandhurlingham.com

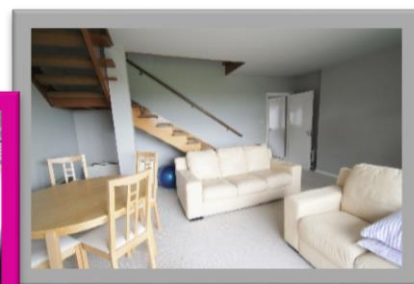


CHART ROAD CHART SUTTON, KENT

- Annexe to Elegant Family Home
- Sitting Room with Doors to Terrace
- Fitted Kitchen
- Entrance Hall with Utility Cupboard
- Master Bedroom
- Bathroom with Electric Shower
- Terraced Area
- Allocated Parking

Available beginning October 2017 for single professional. The annexe forms part of a detached family home which is situated in an elevated position and enjoys glorious far reaching rural views over the Weald of Kent. On the ground floor, the accommodation comprises the entrance hall with utility cupboard, the kitchen fitted with electric oven, fridge/freezer, dishwasher and washing machine and the sitting room with garden doors opening onto the terrace and views over the countryside beyond. To the first floor is the double bedroom with fitted wardrobes and bathroom with electric shower. Allocated parking.

Utilities: Mains electricity, electric storage heaters, part underfloor heating. Council tax and water billed by Landlord (approx. cost £80 per month). Satellite dish and phone line provided. EPC Rating E.

Directions Overleaf

£795.00 Per Calendar Month

Letting fees information

The asking rent does not include letting fees. Depending on your circumstances and the property you select, the letting agent may also apply the following upfront fees:

1. general administration fees of £250 inclusive of VAT, this covers costs of referencing and drawing up of tenancy agreement
2. An admin fee £90 inclusive of VAT for the drawing up of tenancy extensions
3. Check-out inventory fees at the end of the tenancy
4. Guarantor arrangement/application fees
5. Tenancy Renewal fee applicable for £75
6. Pets disclaimer fees/additional pet deposit

Fees may be charged on a per person, or per property, basis and will vary from agent to agent, so confirm before viewing.