

BEARSTED

KENT



The Green Bearsted Kent ME14 4DN

This stunning Grade II Listed property occupies a sought after position overlooking the Village Green in Bearsted. Exhibiting many period features the property is believed to date from the 16th century with later additions and is presented in immaculate order throughout.

Renovated to a very high standard, including rewiring, a high pressure hot water system and air conditioning in the top floor bedrooms, the property provides flexible accommodation with rooms arranged over three floors.

- Stunning Grade II Listed Property
- Drawing Room with Fireplace
- Sitting Room with Fireplace
- Dining Room with Fireplace
- Kitchen and Breakfast Room
- Utility Room, Cloakroom and Cellar
- Master Bedroom
- Four Further Bedrooms
- Walled Garden
- Off Road Parking
- Walking Distance to Mainline Station





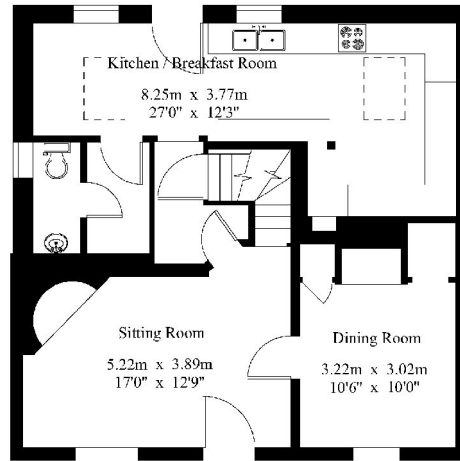


Ivy House

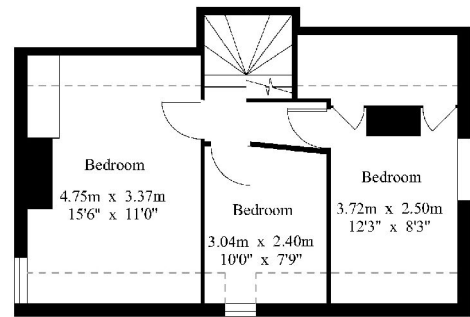
Gross Internal Area : 173.1 sq.m (1863 sq.ft.)



Cellar

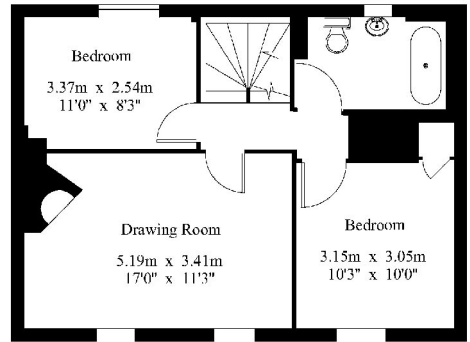


Ground Floor

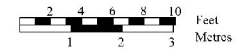


Second Floor

----- Restricted Height



First Floor



For Identification Purposes Only.
© 2017 Trueplan (UK) Limited (01892) 614 881





SERVICES

Mains electricity, gas, water and drainage.

EPC Rating: n/a

Maidstone Borough Council - Council Tax Band G

Please note that it should not be assumed that any fixtures and fittings are automatically included within the sale of this property.



The Corner House, Stone Street
Cranbrook, Kent TN17 3HE

Tel: 01580 715400

Fax: 01580 715122

Email: enquiries@harpersandhurlingham.com

Web: www.harpersandhurlingham.com

Misrepresentation Act 1967. This brochure and the descriptions and measurements herein do not constitute representation and whilst every effort has been made to ensure accuracy, this cannot be guaranteed.

H1013 Printed by Ravensworth 01670 713330