

BENENDEN

KENT



The Street Benenden Kent TN17 4DJ

Originally the village sweet shop, thought to date back to circa 1830, this charming Grade II Listed property retains many original features including exposed beams and open fireplaces.

The enclosed garden benefits from a stone terrace which leads to a lawn bordered with mature flower and shrub beds.

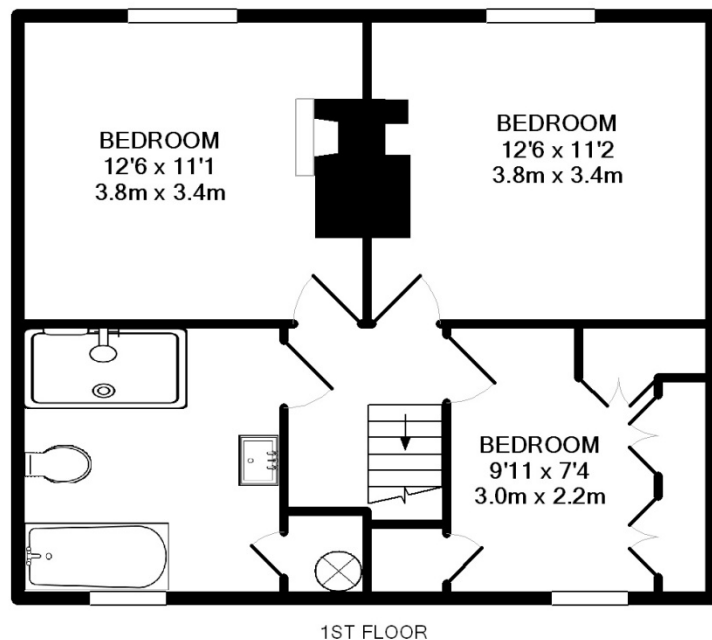
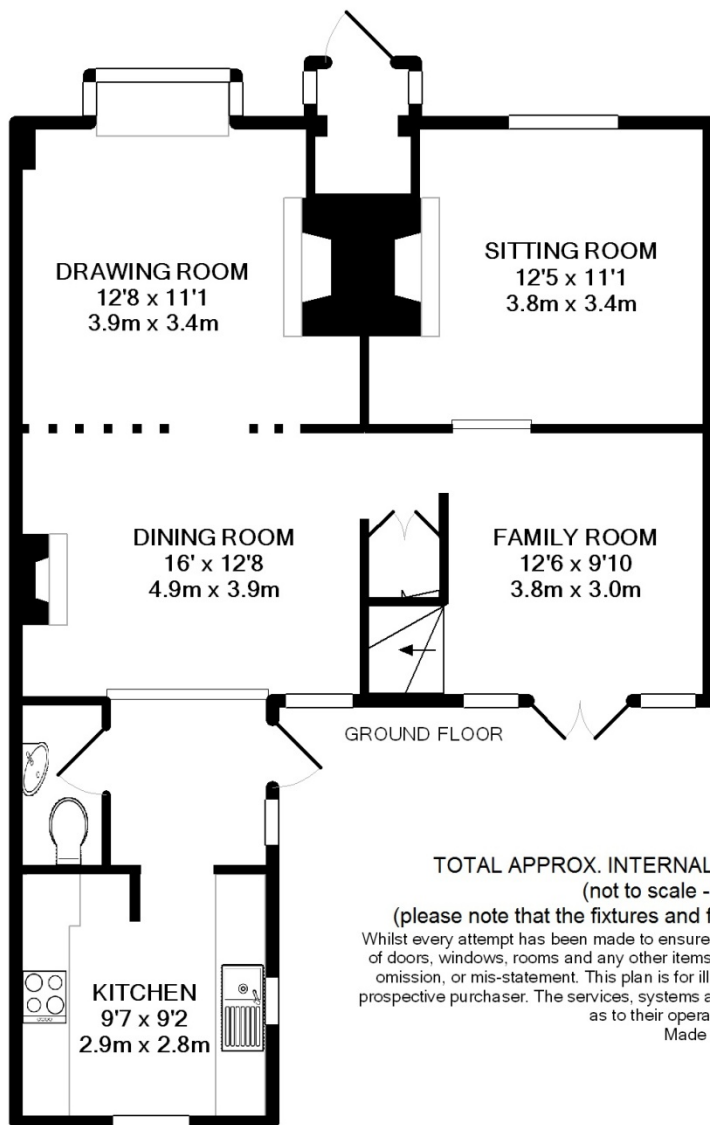
Located in this sought after village where leather on willow is a common sound during the summer on the village green.

- Detached Listed Cottage
- Oodles of Charm and Character
- Prominent Village Location
- Drawing Room with Fireplace
- Sitting Room with Fireplace
- Dining Room with Fireplace
- Family Room with Doors to Garden
- Master Bedroom
- Two Double Bedrooms
- Family Bathroom
- Enclosed Attractive Garden
- Cranbrook School Catchment Area









TOTAL APPROX. INTERNAL FLOOR AREA 1205SQ.FT. (111.9SQ.M)

(not to scale - for layout purposes only)

(please note that the fixtures and fittings are not necessarily included in the sale)

Whilst every attempt has been made to ensure the accuracy of the floor plan contained here, measurements of doors, windows, rooms and any other items are approximate and no responsibility is taken for any error, omission, or mis-statement. This plan is for illustrative purposes only and should be used as such by any prospective purchaser. The services, systems and appliances shown have not been tested and no guarantee as to their operability or efficiency can be given

Made with Metropix ©2012





SERVICES

Mains electricity, gas, water and drainage.

EPC Rating: n/a

Tunbridge Wells Borough Council - Council Tax Band E

Please note that it should not be assumed that any fixtures and fittings are automatically included within the sale of this property.



The Corner House, Stone Street
Cranbrook, Kent TN17 3HE

Tel: 01580 715400

Fax: 01580 715122

Email: enquiries@harpersandhurlingham.com

Web: www.harpersandhurlingham.com

Misrepresentation Act 1967. This brochure and the descriptions and measurements herein do not constitute representation and whilst every effort has been made to ensure accuracy, this cannot be guaranteed.

H1013 Printed by Ravensworth 01670 713330