

CRANBROOK

KENT



Cranbrook Kent TN17 3AJ

This delightful mid terrace Grade II Listed cottage is located on the outskirts of the sought after Town of Cranbrook. Deceptively spacious the cottage provides a fusion of old and new with period features throughout including exposed beams.

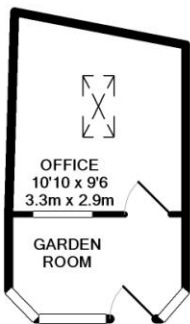
The accommodation consists of a sitting room with log burner and a kitchen/breakfast room on the ground floor, on the first floor there are two double bedrooms, a study/nursery and a family bathroom.

Outside the garden is paved and leads to a detached summer house and office.

- Grade II Listed Terrace Cottage
- Edge of Town Location
- Sitting Room with Log Burner
- Kitchen/Breakfast Room
- Two Double Bedrooms
- Study/Nursery
- Family Bathroom
- Detached Summer House and Office
- Paved Enclosed Garden
- Main Line Rail Services at Staplehurst
- Walking Distance to Local Amenities
- Cranbrook School Catchment Area

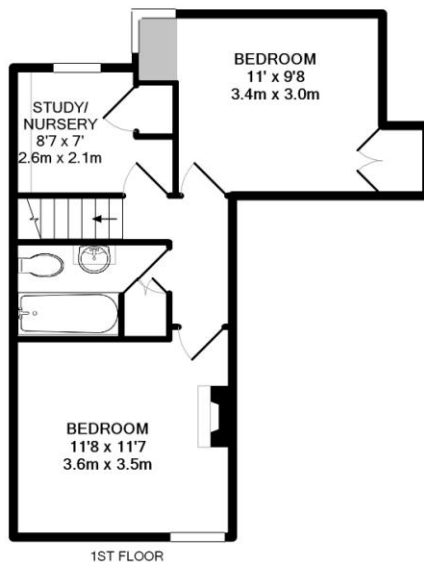
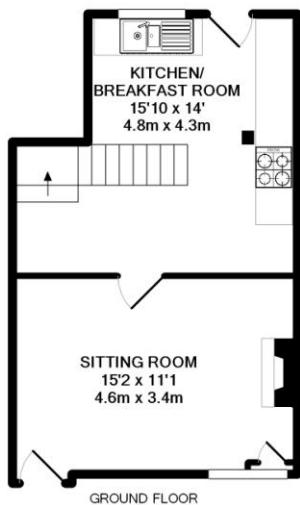






TOTAL APPROX. INTERNAL FLOOR AREA (excluding outbuilding) 720.21SQ.FT. (66.91SQ.M)
(not to scale - for layout purposes only)

Whilst every attempt has been made to ensure the accuracy of the floor plan contained here, measurements of doors, windows, rooms and any other items are approximate and no responsibility is taken for any error, omission, or mis-statement. This plan is for illustrative purposes only and should be used as such by any prospective purchaser. The services, systems and appliances shown have not been tested and no guarantee as to their operability or efficiency can be given
Made with Metropix ©2013



SERVICES

Mains electricity, gas, water and drainage.

Tunbridge Wells Borough Council - Council
Tax Band D

H&H
HARPERS AND HURLINGHAM

The Corner House, Stone Street
Cranbrook, Kent TN17 3HE

Tel: 01580 715400

Fax: 01580 715122

Email: enquiries@harpersandhurlingham.com

Web: www.harpersandhurlingham.com

Misrepresentation Act 1967. This brochure and the descriptions and measurements herein do not constitute representation and whilst every effort has been made to ensure accuracy, this cannot be guaranteed.